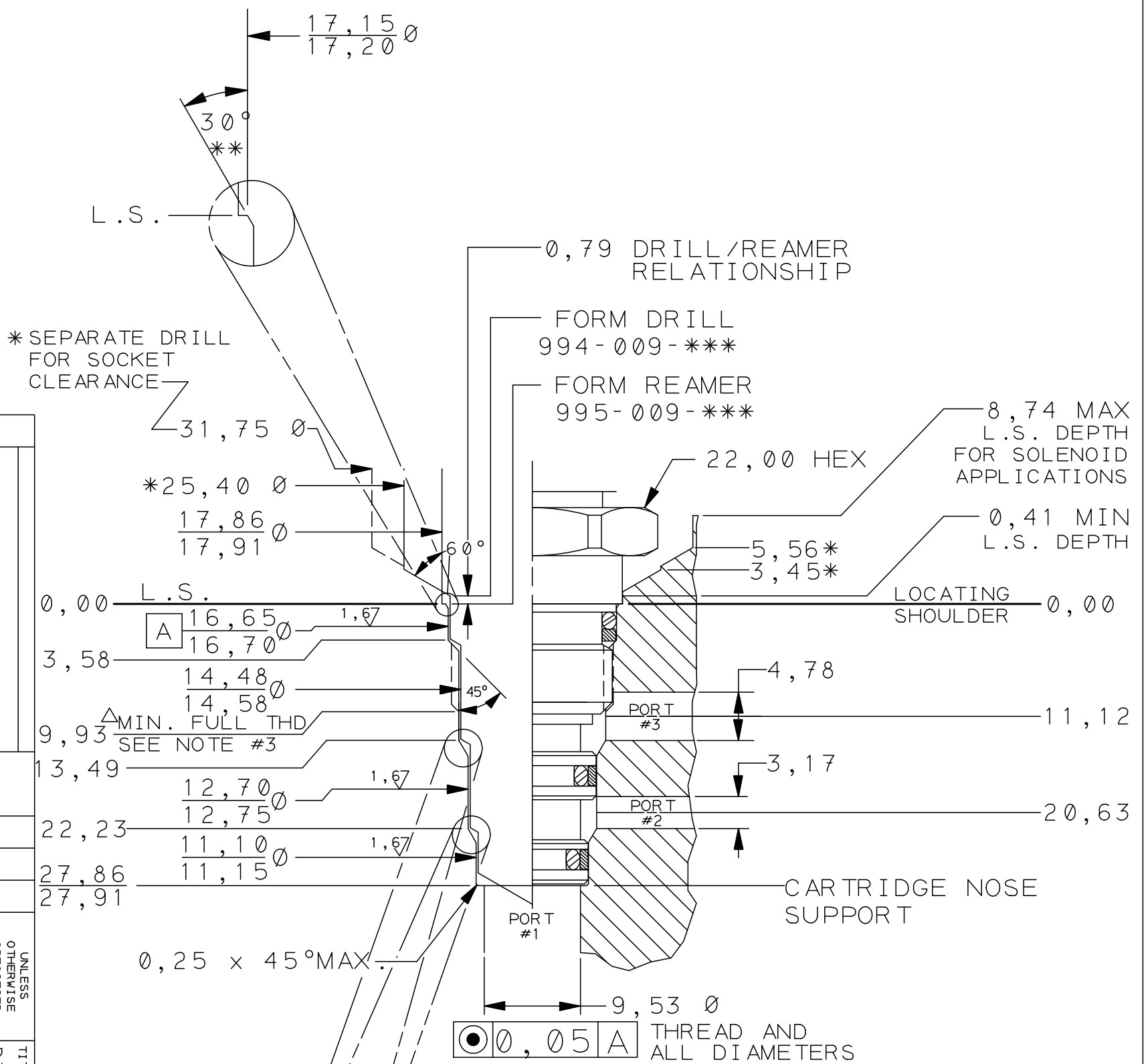
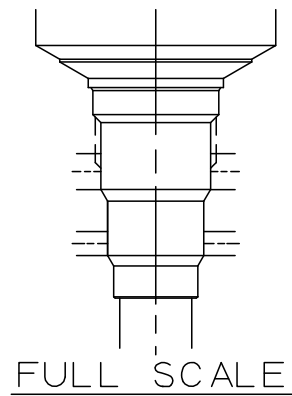


T-9A CAVITY DETAILS
 (ALL DIMENSIONS IN MILLIMETERS)
 Δ M16X1.5-6H ISO (METRIC) THREAD
 15,216/15,026 PITCH DIA.
 IMPORTANT: SEE NOTE #3 BELOW.



- NOTES:
- * 1) WHEN CAVITY L.S. APPROACHES 3,45 DEEP A 25,40 Ø STEP WILL BE CREATED WITH FORM DRILL FOR CARTRIDGE HEX CLEARANCE. WHEN CAVITY L.S. IS MORE THAN 5,56 DEEP A 31,75 DIA DRILL AS SHOWN ABOVE MUST BE ADDED TO INSTALL CARTRIDGE USING A THIN WALL SOCKET.
 - **2) ALL O-RING "LEAD IN'S" TO BE SMOOTH AND FREE OF NICKS AND SHARP EDGES.
 - 3) TO ACHIEVE MINIMUM FULL THD SPECIFIED A BOTTOMING TAP WITH MINIMUM LEAD MUST BE USED. OTHERWISE DAMAGE WILL OCCUR TO O-RING LEAD-IN.



PROPRIETARY NOTICE
 THIS DRAWING DESCRIBES A PROPRIETARY PRODUCT OF SUN HYDRAULICS CORPORATION AND MAY NOT BE REPRODUCED OR GIVEN TO A THIRD PARTY WITHOUT WRITTEN PERMISSION FROM SUN HYDRAULICS CORPORATION
 © SUN HYDRAULICS CORPORATION

UNLESS OTHERWISE SPECIFIED DIM. TOLERANCE +0, -0,13 mm		ANGLE TOL ± 1/2°		FINISH 2.0 μm		REMOVE ALL BURRS	
TITLE T-9A CAVITY DIMENSIONS, TOOLING, PORTING				SCALE REF. 2:1		SERIES "P"	
DRAWN R/B		CHECK		RELEASE		HEAT TREAT & FINISH	
DATE 1/9/90		DATE		DATE		DATE	
REVISION G		PART NO. T-9A METRIC		SHEET 2 OF 3			

701 TALLEYVAST ROAD
 SARASOTA, FLORIDA 34243, USA
 TELEPHONE (941) 562-1500

REVISION G
 PART NO. T-9A METRIC
 SHEET 2 OF 3