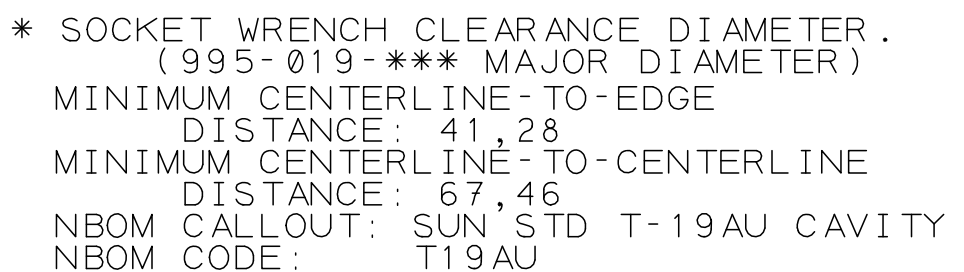


(ALL DIMENSIONS ARE IN MILLIMETERS)
 ΔM48 x 2.0-6H ISO (METRIC) THREAD
 46,70/46,92 PITCH DIA.



PROPRIETARY NOTICE
THIS DRAWING DESCRIBES A
PROPRIETARY PRODUCT OF
SUN HYDRAULICS CORPORATION
AND MAY NOT BE REPRODUCED OR
GIVEN TO A THIRD PARTY WITHOUT **
WRITTEN PERMISSION FROM
SUN HYDRAULICS CORPORATION
© SUN HYDRAULICS CORPORATION

ALL O-RING "LEAD IN'S" TO
BE SMOOTH AND FREE OF NICKS
AND SHARP EDGES.

[illegible]

REVISION	PART NO. T-19AU METRIC
C	SHEET 3 OF 6

APPLICATION NOTES:

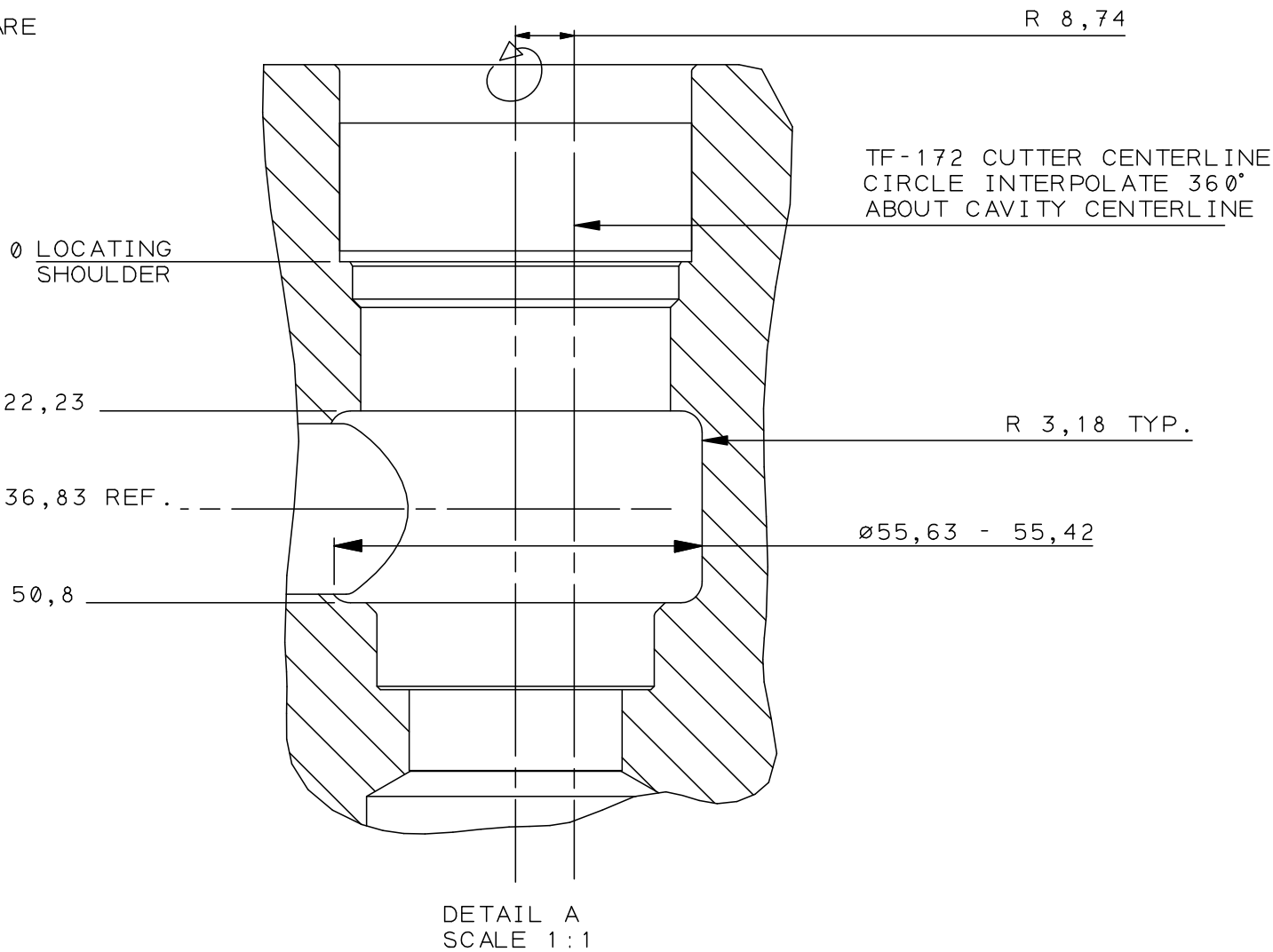
T-19AU CAVITY ANNULUS DETAILS
(ALL DIMENSIONS ARE IN INCHES)

PORT HIT A AND B ARE PREFERRED
HITS ONLY AND HAVE SIMILAR
CAPACITIES, CONTACT SUN FOR
OTHER OPTIONS

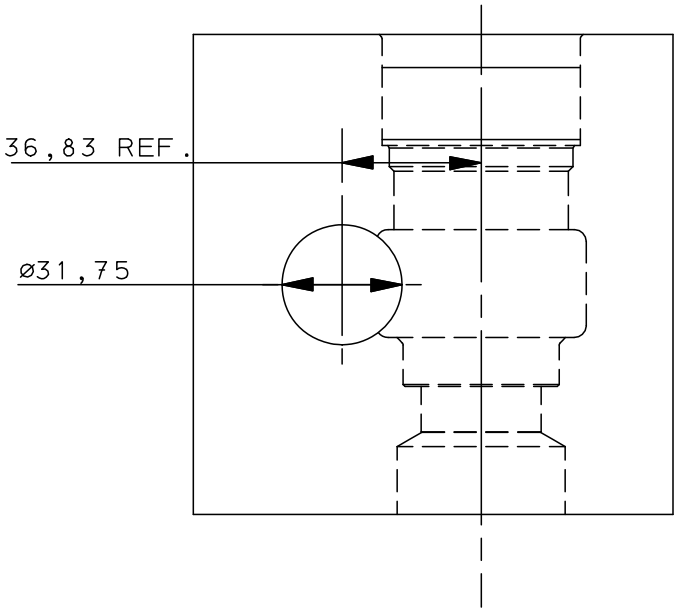
4 BOLT FLANGE FITTINGS ARE
PREFERRED ON WORK PORTS

MODIFIED PORT 2 ANNULUS

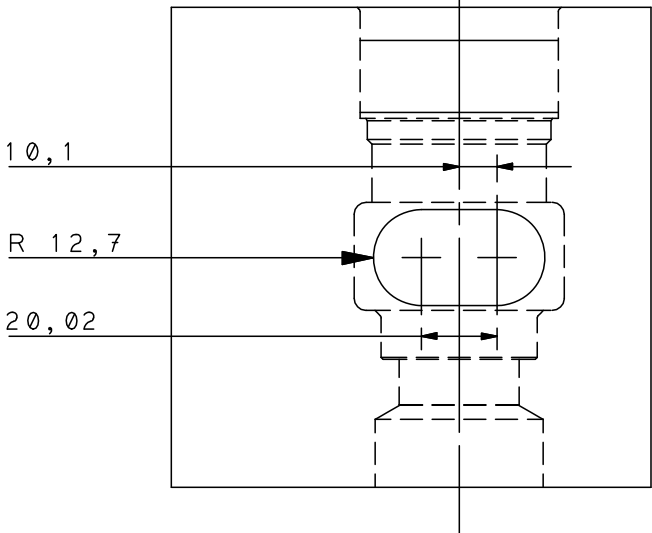
USES ANNULUS CUTTER 998-892-***



PREFERRED PORT
HIT A:
(USED TO CONNECT MULTIPLE CAVITIES)



PREFERRED PORT
HIT B:



C		REVISED TOOLING P/N. REVISED DIMS FOR CAVITY / TOOLING CONSISTENCY.	05MAY11	JRS	RCL	10164	UNLESS OTHERWISE SPECIFIED DIM. TOLERANCE $\pm .013$ mm		TITLE T-19AU CAVITY DIMENSIONS, TOOLING, PORTING		REVISION C	PART NO. T-19AU METRIC
B		ADDED METRIC TOL. BLOCK TO SHEETS 3 - 6					SPECIFIED UNLESS OTHERWISE SPECIFIED		SCALE REF. 1:1		SHEET 4 OF 6	
A		REDRAWN IN VCADD: PAGE 1 CHANGED TO SHOW CAVITY DIMENSIONS: ANNULUS DIMENSIONS AND PORT HITS MOVED TO PAGE 2: 67.46 WAS 66.7	08MAR11	RCL	KDC	10287	FINISH $\pm .013$ mm		SERIES 4+			
LET		RELEASED TO PRODUCTION	18NOV10	SAS	RJB	10116	REMOVE ALL BURRS		DATE 05JUL10			
		REVISION	DATE	DRN	CHK	REL						

