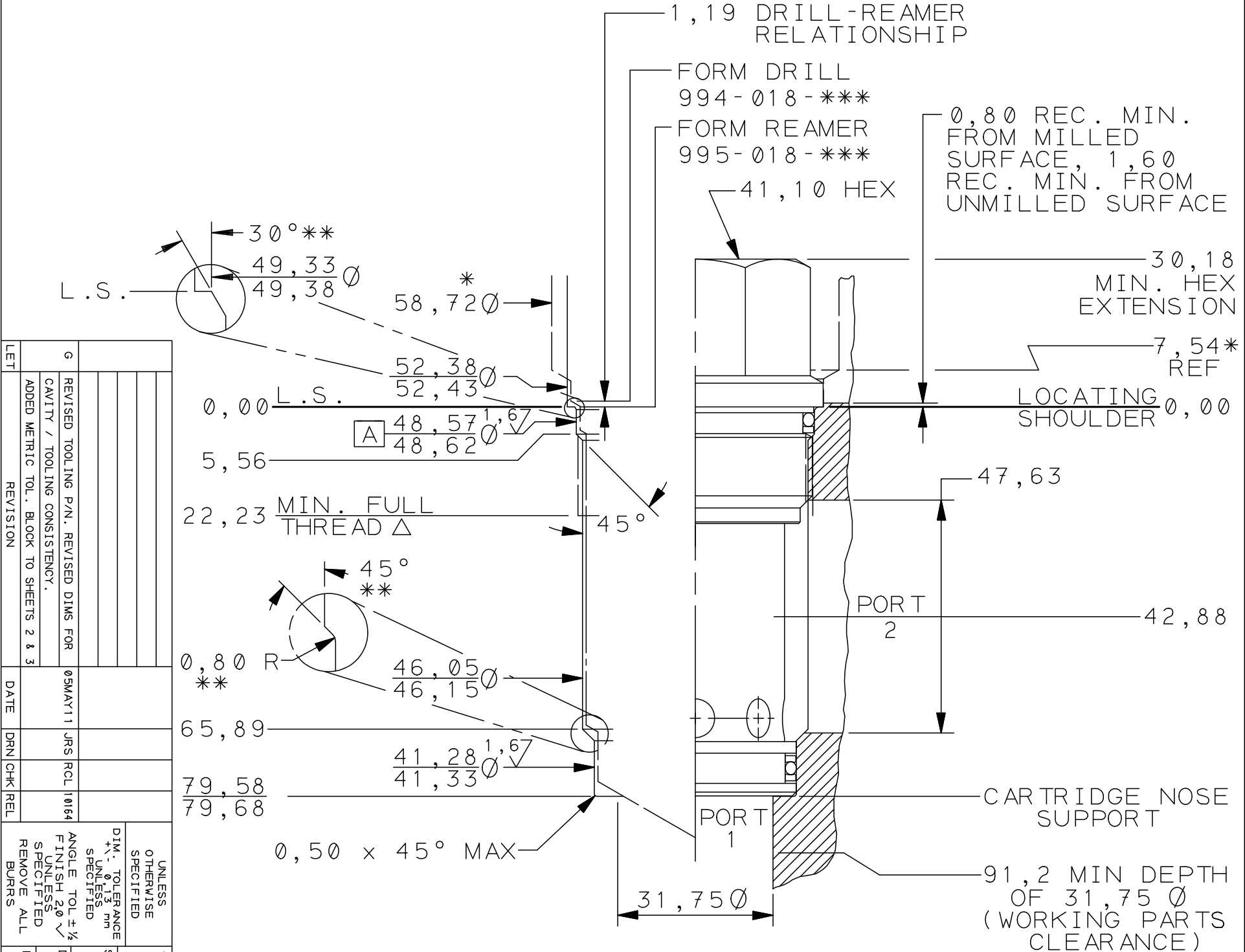


T-18A CAVITY DETAILS

(ALL DIMENSIONS ARE IN MILLIMETERS)
 Δ M48 x 2.0-6H ISO (METRIC) THREAD
 46,70/46,92 PITCH DIA.



| | | |
|----------|---|---|
| LET | 6 | REVISED TOOLING P/N. REVISED DIMS FOR CAVITY / TOOLING CONSISTENCY. |
| REVISION | | ADDED METRIC TOL. BLOCK TO SHEETS 2 & 3 |
| DATE | | 05MAY11 |
| DRN | | JRS ROL |
| REL | | 10164 |

| | | |
|----------------------------|---|-----------------------------------|
| UNLESS OTHERWISE SPECIFIED | DIM. TOLERANCE | ±0,13 mm |
| ANGLE | TOL ±1/2 | UNLESS SPECIFIED |
| FINISH | 20 | UNLESS SPECIFIED REMOVE ALL BURRS |
| TITLE | T-18A CAVITY DIMENSIONS, TOOLING, PORTING | |
| SCALE | 1:1 | |
| DRAWN | CHECK | RELEASE |
| HHP | JDA | |
| DATE | DATE | DATE |
| 4-14-03 | 5-6-03 | |
| MATERIAL | HEAT TREAT & FINISH | |

REVISION G

PART NO. T-18A METRIC

SHEET 2 OF 3

1500 WEST UNIVERSITY PARKWAY
 SARASOTA, FLORIDA 34243, USA
 TELEPHONE (941) 555-2983

⊙ 0,05 A THREAD AND ALL DIAMETERS

* SOCKET WRENCH CLEARANCE DIAMETER . (994-018-*** MAJOR DIAMETER)
 MINIMUM CENTERLINE-TO-EDGE DISTANCE: 34,92
 MINIMUM CENTERLINE-TO-CENTERLINE DISTANCE: 57,94
 NBOM CALLOUT: SUN STD T-18A CAVITY
 NBOM CODE: T18A

PROPRIETARY NOTICE
 THIS DRAWING DESCRIBES A PROPRIETARY PRODUCT OF SUN HYDRAULICS CORPORATION AND MAY NOT BE REPRODUCED OR GIVEN TO A THIRD PARTY WITHOUT WRITTEN PERMISSION FROM SUN HYDRAULICS CORPORATION
 © SUN HYDRAULICS CORPORATION

** ALL O-RING "LEAD IN'S" TO BE SMOOTH AND FREE OF NICKS AND SHARP EDGES.

REVISION G

PART NO. T-18A METRIC

SHEET 2 OF 3