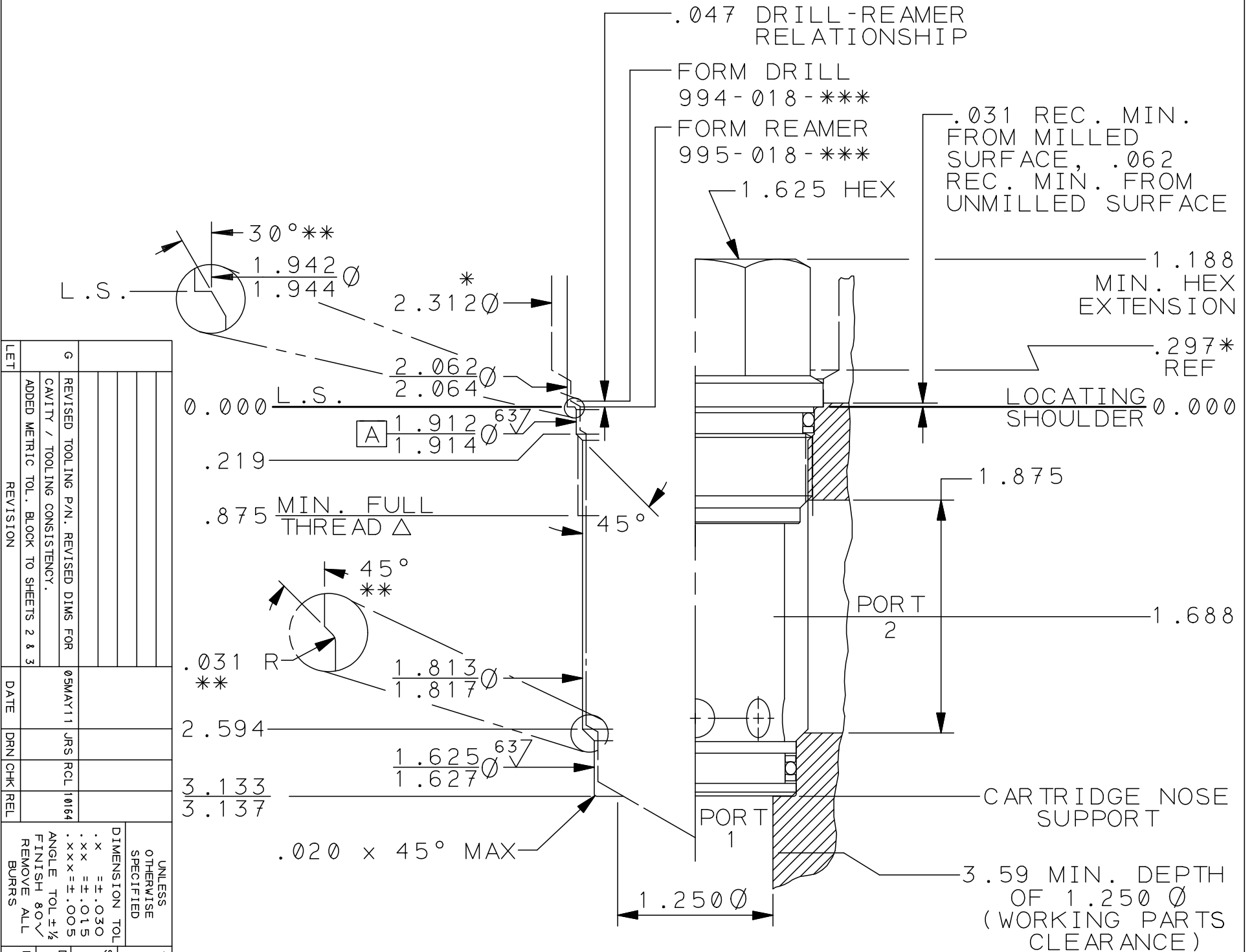


T-18A CAVITY DETAILS  
 (ALL DIMENSIONS ARE IN INCHES)  
 ΔM48 x 2.0-6H ISO (METRIC) THREAD  
 1.8386/1.8474 PITCH DIA.



LET	6	REVISED TOOLING P/N, REVISED DIMS FOR CAVITY / TOOLING CONSISTENCY.	05MAY11	JRS	ROL	10164
REVISION		ADDED METRIC TOL. BLOCK TO SHEETS 2 & 3				
DATE						
DRN						
CHK						
REL						

UNLESS OTHERWISE SPECIFIED		DIMENSION TOL	
.x	±.030	.x	±.030
.xx	±.015	.xx	±.015
.xxx	±.005	.xxx	±.005
ANGLE TOL ± 1/2		FINISH 80 ✓	
REMOVE ALL BURS			
TITLE	T-18A CAVITY	SCALE	1:1
DIMENSIONS, TOOLING, PORTING		REF.	SERIES 4
DRAWN	HHP	CHECK	JDA
DATE	4-14-83	RELEASE	DATE
MATERIAL	HEAT TREAT & FINISH		

REVISION G  
 PART NO. T-18A INCH  
 SHEET 1 OF 3

1500 WEST UNIVERSITY PARKWAY  
 SARASOTA, FLORIDA 34245, USA  
 TELEPHONE (941) 555-2983

⊙ .002 A THREAD AND ALL DIAMETERS

\* SOCKET WRENCH CLEARANCE DIAMETER . (994-018-\*\*\* MAJOR DIAMETER)  
 MINIMUM CENTERLINE-TO-EDGE DISTANCE: 1.375  
 MINIMUM CENTERLINE-TO-CENTERLINE DISTANCE: 2.281  
 NBOM CALLOUT: SUN STD T-18A CAVITY  
 NBOM CODE: T18A

PROPRIETARY NOTICE  
 THIS DRAWING DESCRIBES A PROPRIETARY PRODUCT OF SUN HYDRAULICS CORPORATION AND MAY NOT BE REPRODUCED OR GIVEN TO A THIRD PARTY WITHOUT WRITTEN PERMISSION FROM SUN HYDRAULICS CORPORATION  
 © SUN HYDRAULICS CORPORATION

\*\* ALL O-RING "LEAD IN'S" TO BE SMOOTH AND FREE OF NICKS AND SHARP EDGES.

REVISION G  
 PART NO. T-18A INCH  
 SHEET 1 OF 3