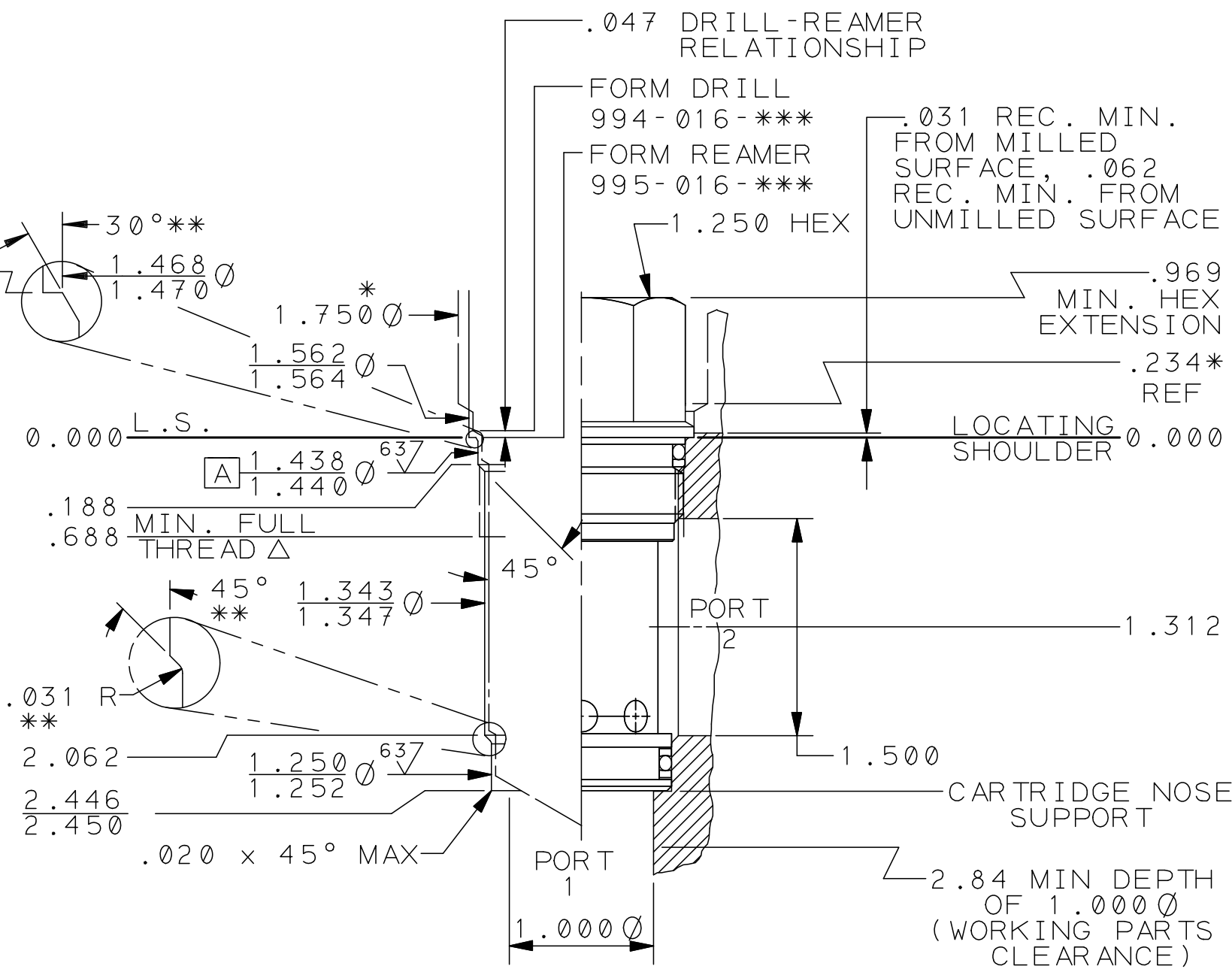


T-16A CAVITY DETAILS
 (ALL DIMENSIONS ARE IN INCHES)
 Δ M36 x 2.0-6H ISO (METRIC) THREAD
 1.3662/1.3750 PITCH DIA.

LET	K	REVISOR	REVISED TOOLING P/N, REVISED DIMS FOR CAVITY/TOOLING CONSISTENCY.	DATE	05MAY11
	J	REVISION	ADDED METRIC TOL. BLOCK TO SHEETS 2 & 3. REDRAWN TO BE CONSISTENT WITH SIMILAR CAVS .002 CONCENTRICITY WAS .001	DATE	30DEC02
		DRN		DATE	28JUL99
		CHK		DATE	
		REL		DATE	
		UNLESS OTHERWISE SPECIFIED			
		DIMENSION TOL			
		.XX = ±.030			
		.XX = ±.015			
		.XXX = ±.005			
		ANGLE TOL ± 1/2			
		FINISH 80 ✓			
		REMOVE ALL BURS			
		TITLE			
		T-16A CAVITY			
		DIMENSIONS, TOOLING, PORTING			
		SCALE REF.			
		1:1 SERIES 3			
		MATERIAL			
		HEAT TREAT & FINISH			
		REVISION			
		K			
		PART NO. T-16A INCH			
		SHEET 1 OF 3			



⊙ .002 A THREAD AND ALL DIAMETERS

* SOCKET WRENCH CLEARANCE DIAMETER, (994-016-*** MAJOR DIAMETER)
 MINIMUM CENTERLINE-TO-EDGE DISTANCE: 1.031
 MINIMUM CENTERLINE-TO-CENTERLINE DISTANCE: 1.781
 NBOM CALLOUT: SUN STD T-16A CAVITY
 NBOM CODE: T16A

PROPRIETARY NOTICE
 THIS DRAWING DESCRIBES A PROPRIETARY PRODUCT OF SUN HYDRAULICS CORPORATION AND MAY NOT BE REPRODUCED OR GIVEN TO A THIRD PARTY WITHOUT WRITTEN PERMISSION FROM SUN HYDRAULICS CORPORATION
 © SUN HYDRAULICS CORPORATION

** ALL O-RING "LEAD IN'S" TO BE SMOOTH AND FREE OF NICKS AND SHARP EDGES.



REVISION PART NO. T-16A INCH SHEET 1 OF 3