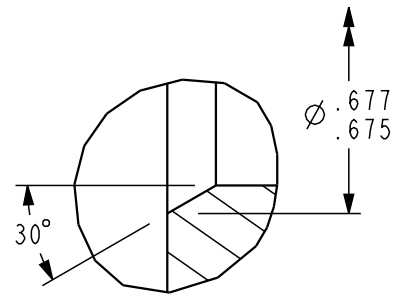
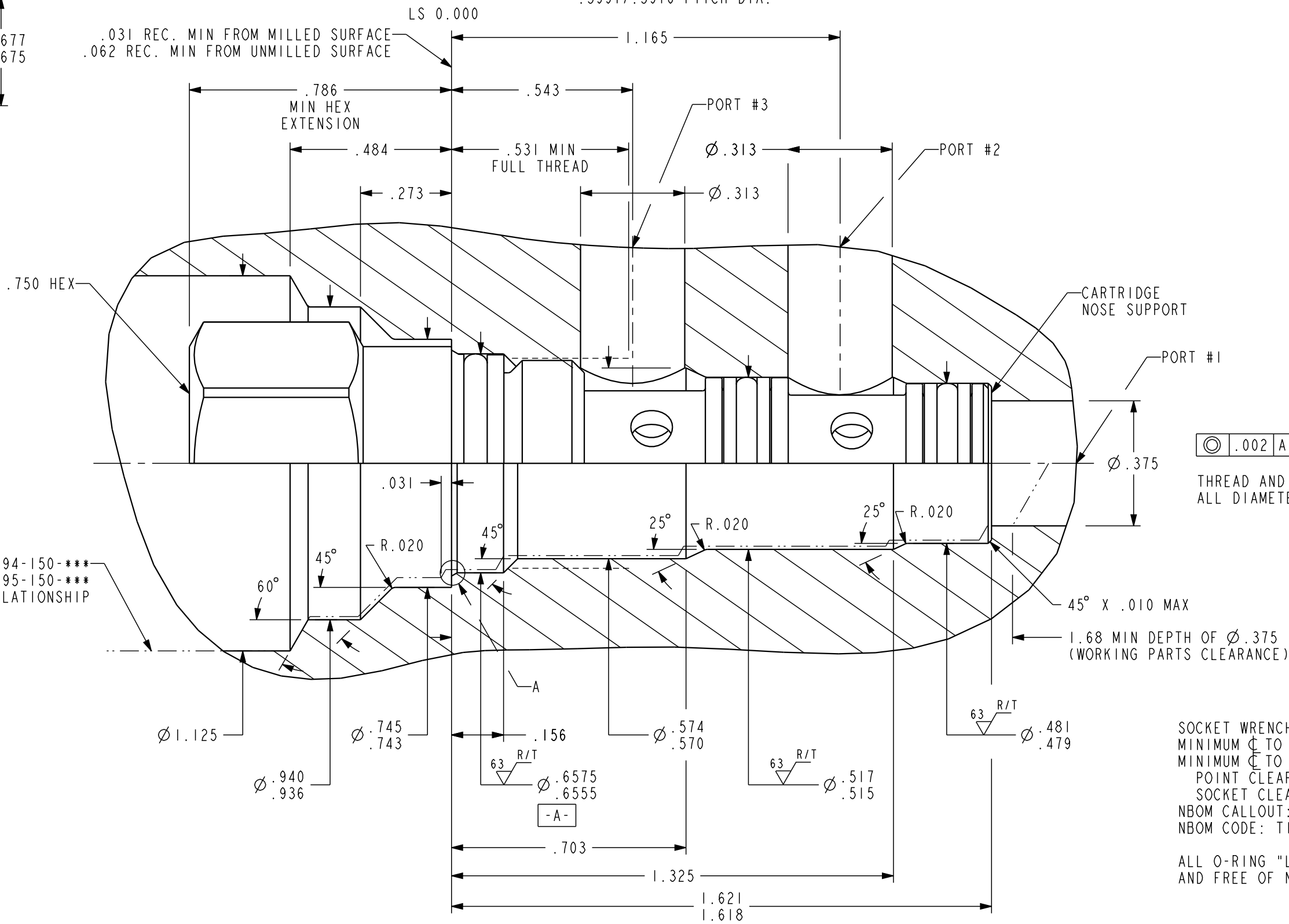


T-150A CAVITY  
 (ALL DIMENSIONS IN INCHES)  
 M16 X 1.5-6H ISO (METRIC) THREAD  
 .5991/.5916 PITCH DIA.



DETAIL A  
 SCALE 15:1



FORM DRILL 994-150-\*\*\*  
 FORM REAMER 995-150-\*\*\*  
 .031 DRILL-REAMER RELATIONSHIP

⊙ .002 A  
 THREAD AND ALL DIAMETERS

SOCKET WRENCH CLEARANCE DIA = 1.125  
 MINIMUM  $\phi$  TO EDGE DISTANCE = .484  
 MINIMUM  $\phi$  TO  $\phi$  =  
 POINT CLEARANCE: .875  
 SOCKET CLEARANCE: .969  
 NBOM CALLOUT: SUN STD T-150A CAVITY  
 NBOM CODE: T150A

ALL O-RING "LEAD IN'S" TO BE SMOOTH  
 AND FREE OF NICKS AND SHARP EDGES.

								TITLE T-150A CAVITY SC 3:1 REF SERIES 0 DWN CL CHK DAS DATE 05JAN16 DATE 05JAN16 FNSH HT TR MATL			REV A PN T-150A
DIMENSION TOL .XX ± .015 .XXX ± .003 ANGLE TOL ± 1 FINISH 80 REMOVE ALL BURRS .005 MAX. BREAK MACHINING STANDARD S-180 IAW ASME Y14.100											
A	RELEASED	20FEB18	SM	JRS	15464				CORPORATION 1500 WEST UNIVERSITY PKWY SARASOTA, FLORIDA 34243, USA TELEPHONE (941) 362-1200		
REV	NOTES	DATE	DWN	CHK	ECR						